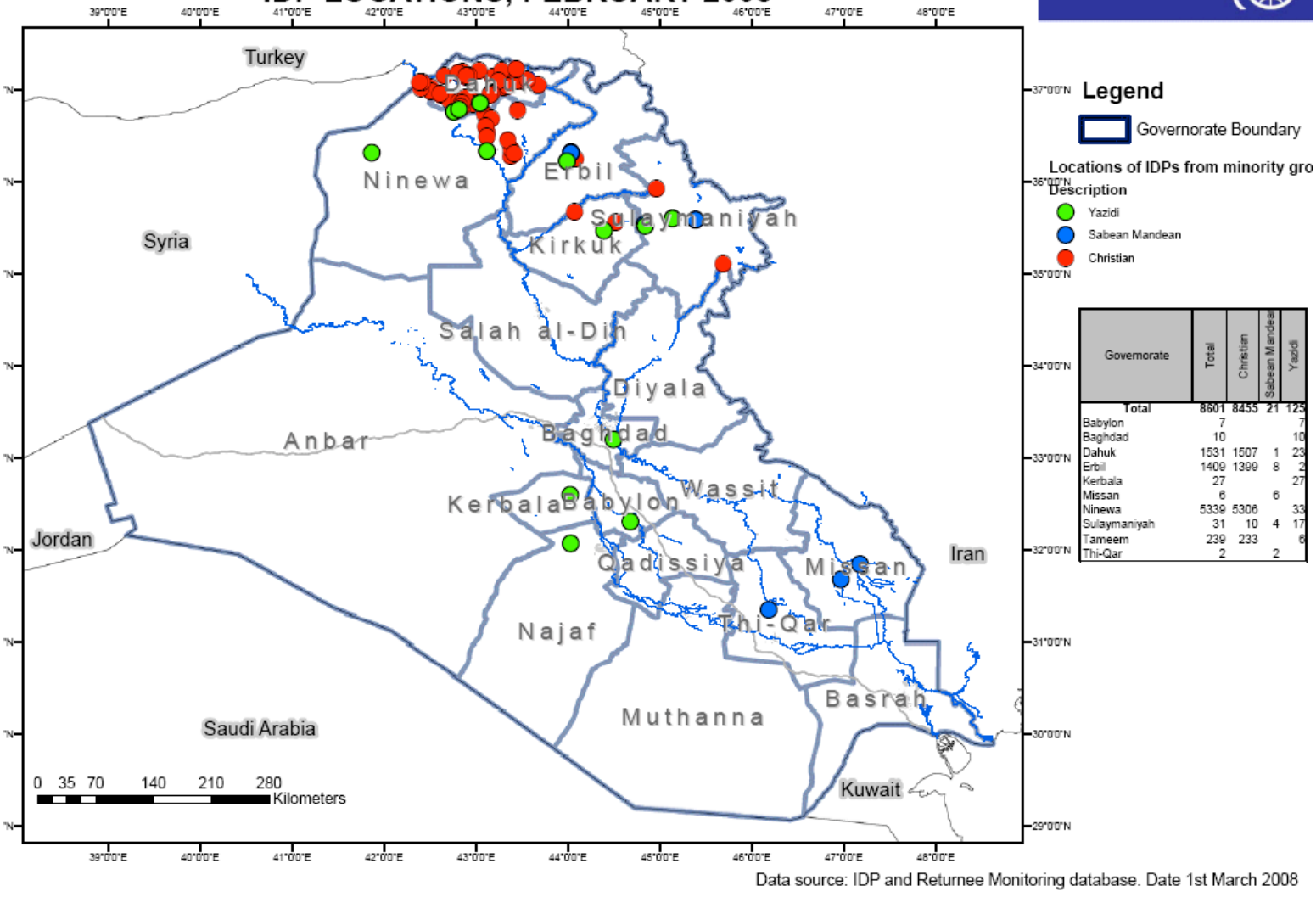




Minority Religious Groups in Iraq

IOM IRAQ – ATLAS IDP LOCATIONS, FEBRUARY 2008

POST-FEBRUARY 2008
IDP MONITORING AND
NEEDS ASSESSMENTS

Contents

Yazidi Population 2

Christian Population 5

Sabeen Mandaean Population 11



Yazidi Population

Governorate	District	Village/Neighbourhood	Families	%
Total			167	100.0%
Babylon	Hashimiya	Al Qasim	7	4.2%
Baghdad	Mada'in	Nahrawan	10	6.0%
Dahuk	Dahuk	Baroshke	6	3.6%
Dahuk	Sumel	Khanke Collective	9	5.4%
Dahuk	Sumel	Rubaibiya	8	4.8%
Erbil	Erbil	Ainkawa	2	1.2%
Kerbala	Kerbala	Al Mahdi	9	5.4%
Kerbala	Kerbala	Kerbala	18	10.8%
Ninewa	Mosul	Mosul	8	4.8%
Ninewa	Sinjar	Sinjar	25	15.0%
Sulaymaniyah	Chamchamal	Shorsh	3	1.8%
Sulaymaniyah	Sulaymaniya	Bazyan	14	8.4%
Tameem	Kirkuk	Kirkuk	6	3.6%

Living Arrangement (Type of housing)

Governorate	District	Village/ Neighbourhood	Total	Collective town settlement	In the house of host family or relatives	Other	Rented housing	Tent near house of host
Total			100%	29%	17%	10%	24%	20%
Erbil	Erbil	Ainkawa	100%				100%	
Kerbala	Kerbala	Al Mahdi	100%	100%				
Babylon	Hashimiya	Al Qasim	100%				100%	
Dahuk	Dahuk	Baroshke	100%				100%	
Sulaymaniyah	Sulaymaniya	Bazyan	100%		57%	36%	7%	
Kerbala	Kerbala	Kerbala	100%	100%				
Dahuk	Sumel	Khanke Collective	100%	11%		78%	11%	
Tameem	Kirkuk	Kirkuk	100%		100%			
Ninewa	Mosul	Mosul	100%				100%	
Baghdad	Mada'in	Nahrawan	100%		40%		60%	
Dahuk	Sumel	Rubaibiya	100%	100%				
Sulaymaniyah	Chamchamal	Shorsh	100%		100%			
Ninewa	Sinjar	Sinjar	100%					100%



Place of Origin

				FROM			
Governorate	District	Village/Neighbourhood	Total	Babylon	Baghdad	Diyala	Ninewa
Total			100%	6%	8%	22%	65%
Babylon	Hashimiya	Al Qasim	100%	100%			
Baghdad	Mada'in	Nahrawan	100%		100%		
Dahuk	Dahuk	Baroshke	100%				100%
Dahuk	Sumel	Khanke Collective	100%				100%
Dahuk	Sumel	Rubaibiya	100%				100%
Erbil	Erbil	Ainkawa	100%				100%
Kerbala	Kerbala	Al Mahdi	100%			100%	
Kerbala	Kerbala	Kerbala	100%			100%	
Ninewa	Mosul	Mosul	100%				100%
Ninewa	Sinjar	Sinjar	100%				100%
Sulaymaniyah	Chamchamal	Shorsh	100%				100%
Sulaymaniyah	Sulaymaniya	Bazyan	100%				100%
Tameem	Kirkuk	Kirkuk	100%				100%

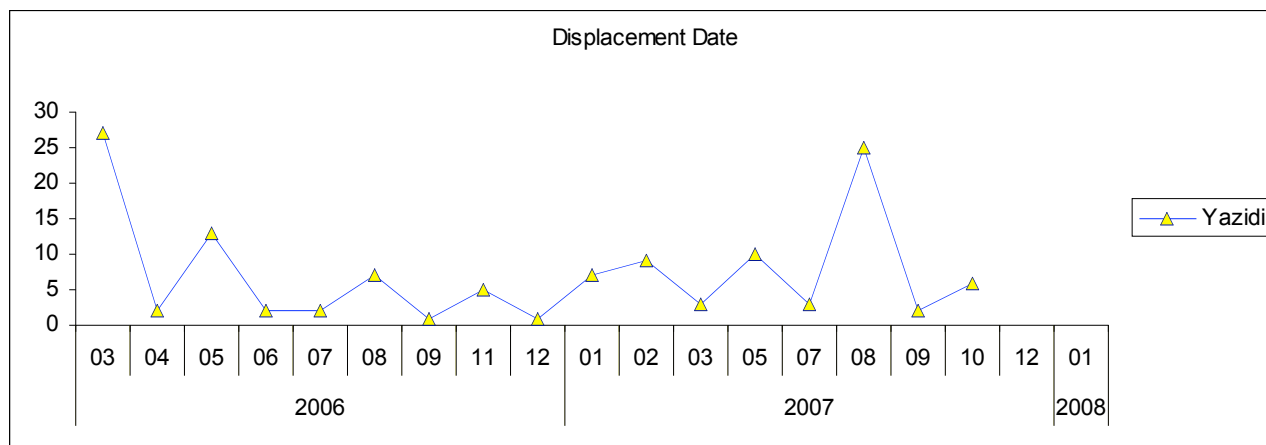
Intentions

Governorate	District	Village/ Neighbourhood	Total	Locally integrate in the current location	Resettle in a third location	Return to their place of origin	Waiting on one or several factors to make a decision
Total			100%	32.0%	5.6%	48.0%	14.4%
Erbil	Erbil	Ainkawa	100%			100.0%	
Kerbala	Kerbala	Al Mahdi	100%				100.0%
Babylon	Hashimiya	Al Qasim	100%			100.0%	
Dahuk	Dahuk	Baroshke	100%		66.7%	33.3%	
Sulaymaniyah	Sulaymaniya	Bazyan	100%	28.6%	7.1%	64.3%	
Kerbala	Kerbala	Kerbala	100%			50.0%	50.0%
Dahuk	Sumel	Khanke Collective	100%	77.8%	22.2%		
Tameem	Kirkuk	Kirkuk	100%			100.0%	
Ninewa	Mosul	Mosul	100%	100.0%			
Baghdad	Mada'in	Nahrawan	100%	100.0%			
Dahuk	Sumel	Rubaibiya	100%	100.0%			
Sulaymaniyah	Chamchamal	Shorsh	100%	100.0%			
Ninewa	Sinjar	Sinjar	100%			100.0%	



Priority needs

Governorate	District	Village/ Neighbourhood	Access to work	Education	Food	Health	Legal Help	Other	Sanitation	Shelter	Water
Babylon	Hashimiya	Al Qasim	100%		100%		100%				
Baghdad	Mada'in	Nahrawan			100%			100%		100%	
Dahuk	Dahuk	Baroshke	67%		100%			33%		67%	
Dahuk	Sumel	Khanke Collective	100%	78%		11%				89%	
Dahuk	Sumel	Rubaibiya	100%		13%						
Erbil	Erbil	Ainkawa	100%	50%						100%	
Kerbala	Kerbala	Al Mahdi	100%							100%	100%
Kerbala	Kerbala	Kerbala	100%							100%	100%
Ninewa	Mosul	Mosul	100%					100%	100%		
Ninewa	Sinjar	Sinjar			100%		100%			100%	
Sulaymaniyah	Chamchamal	Shorsh			100%			100%			
Sulaymaniyah	Sulaymaniya	Bazyan			86%			93%			
Tameem	Kirkuk	Kirkuk	100%		100%					100%	



Christian Population

Governorate	District	Village/Neighbourhood	Families	%
Total			8455	100.0%
Dahuk	Amedi	Amedi	24	0.3%
Dahuk	Amedi	Aradin Nasara	35	0.4%
Dahuk	Amedi	Bamarne	6	0.1%
Dahuk	Amedi	Benata	23	0.3%
Dahuk	Amedi	Bilejank	13	0.2%
Dahuk	Amedi	Chalke	5	0.1%
Dahuk	Amedi	Dawudye	11	0.1%
Dahuk	Amedi	Dihe	18	0.2%
Dahuk	Amedi	Inishke	68	0.8%
Dahuk	Amedi	Jdidke	9	0.1%
Dahuk	Amedi	Kani Mase	13	0.2%
Dahuk	Amedi	Sardarav	7	0.1%
Dahuk	Amedi	Sarsink	45	0.5%
Dahuk	Amedi	Tine	7	0.1%
Dahuk	Dahuk	Bagera Collective	28	0.3%
Dahuk	Dahuk	Bagera Lower	6	0.1%
Dahuk	Dahuk	Baroshke	206	2.4%
Dahuk	Dahuk	Dahuk	411	4.9%
Dahuk	Dahuk	Kuret Gavana	32	0.4%
Dahuk	Dahuk	Malta Islam	5	0.1%
Dahuk	Dahuk	Malta Nasara	2	0.0%
Dahuk	Dahuk	Shakhke	2	0.0%
Dahuk	Dahuk	Shindukha	9	0.1%
Dahuk	Sumel	Avzreek Miri	7	0.1%
Dahuk	Sumel	Avzreek Shani	1	0.0%
Dahuk	Sumel	Baghluja	14	0.2%
Dahuk	Sumel	Bajid Barav	12	0.1%
Dahuk	Sumel	Bakhitme	42	0.5%
Dahuk	Sumel	Hawrezk	61	0.7%
Dahuk	Sumel	Khanke Collective	2	0.0%
Dahuk	Sumel	Misereek Collective	10	0.1%
Dahuk	Sumel	Seje	57	0.7%
Dahuk	Sumel	Semel	2	0.0%
Dahuk	Sumel	Shkafda	21	0.2%
Dahuk	Sumel	Surka	17	0.2%
Dahuk	Zakho	Bedar	20	0.2%
Dahuk	Zakho	Beerke	15	0.2%
Dahuk	Zakho	Bersive Collective	32	0.4%
Dahuk	Zakho	Derabun	39	0.5%
Dahuk	Zakho	Hizawa Collective	12	0.1%
Dahuk	Zakho	Levo	30	0.4%
Dahuk	Zakho	Mergasur	35	0.4%
Dahuk	Zakho	Navkandal	20	0.2%
Dahuk	Zakho	Peshabur Collective	73	0.9%
Erbil	Erbil	Ainkawa	1367	16.2%
Erbil	Erbil	Bahrka	14	0.2%
Erbil	Erbil	Bahrka Collective	10	0.1%
Erbil	erbil	Nawroz	5	0.1%
Erbil	Erbil	Shawes	3	0.0%
Ninewa	Al-Hamdaniya	Al Hamdaniyah	691	8.2%
Ninewa	Al-Hamdaniya	Bartalah	803	9.5%
Ninewa	Al-Hamdaniya	Bashiqa	294	3.5%
Ninewa	Al-Hamdaniya	Krmales	184	2.2%
Ninewa	Mosul	Mosul	49	0.6%
Ninewa	Shekhan	Shekhan	174	2.1%
Ninewa	Tilkaif	Alqosh	791	9.4%
Ninewa	Tilkaif	Batnay	668	7.9%
Ninewa	Tilkaif	Shekhan Maqlub	47	0.6%
Ninewa	Tilkaif	Tal Usqf	861	10.2%
Ninewa	Tilkaif	Tilkef	744	8.8%
Sulaymaniyah	Darbandihkan	Darbandikhan	1	0.0%
Sulaymaniyah	Dokan	Dokan	3	0.0%
Sulaymaniyah	Sulaymaniya	Bazyar	1	0.0%
Sulaymaniyah	Sulaymaniya	Sarchnar	5	0.1%
Tameem	Kirkuk	Dibs	20	0.2%
Tameem	Kirkuk	Kirkuk	210	2.5%
Tameem	Kirkuk	Shorija	3	0.0%



Living Arrangement (Type of housing)

Governorate	District	Village / Neighbourhood	Total	C ollective town Settlement	Former Military camp	In the house of host Family or relatives	Other	Public building	Rented housing	Tent in camp	Tent Near house of host
Total			100%	7.4%		17.1%	0.2%	0.2%	75.1%	0.0%	0.0%
Dahuk	Amedi	Amedi	100%	29.2%		8.3%		8.3%	54.2%		
Dahuk	Amedi	Aradin Nasara	100%	34.3%		60.0%		2.9%			2.9%
Dahuk	Amedi	Bamarne	100%	50.0%		50.0%					
Dahuk	Amedi	Benata	100%	78.3%		13.0%			8.7%		
Dahuk	Amedi	Bilejank	100%	84.6%		15.4%					
Dahuk	Amedi	Chalke	100%	100.0%							
Dahuk	Amedi	Dawudyne	100%	90.9%		9.1%					
Dahuk	Amedi	Dihe	100%	44.4%		55.6%					
Dahuk	Amedi	Inishke	100%	54.5%		39.4%	1.5%	1.5%			3.0%
Dahuk	Amedi	Jidike	100%	100.0%							
Dahuk	Amedi	Kani Mase	100%	100.0%							
Dahuk	Amedi	Sardarav	100%	100.0%							
Dahuk	Amedi	Sarsink	100%	6.7%		57.8%			35.6%		
Dahuk	Amedi	Tine	100%	71.4%		14.3%		14.3%			
Dahuk	Dahuk	Bagera C ollective	100%	92.9%					7.1%		
Dahuk	Dahuk	Bagera Lower	100%					16.7%	83.3%		
Dahuk	Dahuk	Baroshke	100%	1.0%		4.5%		1.0%	93.5%		
Dahuk	Dahuk	Dahuk	100%	1.0%		7.3%	0.5%	0.3%	91.0%		
Dahuk	Dahuk	Kuret Gavana	100%	68.8%		28.1%			3.1%		
Dahuk	Dahuk	Malta Islam	100%						100.0%		
Dahuk	Dahuk	Malta Nasara	100%						100.0%		
Dahuk	Dahuk	Shakhke	100%						100.0%		
Dahuk	Dahuk	Shindukha	100%						100.0%		
Dahuk	Sumel	Avzreek Miri	100%	100.0%							
Dahuk	Sumel	Avzreek Shani	100%	100.0%							
Dahuk	Sumel	Baghluja	100%	85.7%		14.3%					
Dahuk	Sumel	Bajid Barav	100%	83.3%		16.7%					
Dahuk	Sumel	Bakhitme	100%	71.8%		12.8%	5.1%		10.3%		
Dahuk	Sumel	Hawrezk	100%	77.0%		23.0%					
Dahuk	Sumel	Khanke C ollective	100%	50.0%					50.0%		
Dahuk	Sumel	Misereek C ollective	100%					10.0%	90.0%		
Dahuk	Sumel	Seje	100%	100.0%							
Dahuk	Sumel	Semel	100%	50.0%					50.0%		
Dahuk	Sumel	Shkafdlia	100%	42.9%		57.1%					
Dahuk	Sumel	Surka	100%	87.5%					6.3%	6.3%	
Dahuk	Zakho	Bedar	100%	94.4%					5.6%		
Dahuk	Zakho	Beerke	100%	100.0%							
Dahuk	Zakho	Bersive C ollective	100%	100.0%							
Dahuk	Zakho	Derabun	100%	100.0%							
Dahuk	Zakho	Hizawa C ollective	100%	100.0%							
Dahuk	Zakho	Levo	100%	100.0%							
Dahuk	Zakho	Mergasur	100%	100.0%							
Dahuk	Zakho	N avkandal	100%	100.0%							
Dahuk	Zakho	Peshabur C ollective	100%	58.9%		37.0%		4.1%			
Erbil	Erbil	Ainkawa	100%			4.0%	0.6%		95.4%		
Erbil	Erbil	Bahrka	100%						100.0%		
Erbil	Erbil	Bahrka C ollective	100%						100.0%		
Erbil	erbil	Nawroz	100%				40.0%		60.0%		
Erbil	Erbil	Shawes	100%						100.0%		
Ninewa	Al-H amdaniya	Al H amdaniyah	100%			21.4%			78.6%		
Ninewa	Al-H amdaniya	Bartalah	100%			15.7%			84.3%		
Ninewa	Al-H amdaniya	Bashiqa	100%			23.1%			76.9%		
Ninewa	Al-H amdaniya	Krmales	100%	0.5%		13.6%			85.9%		
Ninewa	Mosul	Mosul	100%			63.3%			36.7%		
Ninewa	Shekhan	Shekhan	100%			14.9%			85.1%		
Ninewa	Tilkaif	Alqosh	100%			18.7%			81.3%		
Ninewa	Tilkaif	Balnay	100%			34.1%			65.9%		
Ninewa	Tilkaif	Shekhan Maqlub	100%			12.8%			87.2%		
Ninewa	Tilkaif	Tal U squf	100%			17.5%			82.5%		
Ninewa	Tilkaif	Tilkef	100%			17.7%			82.3%		
Sulaymaniyah	U arbandihkan	U arbandihkan	100%						100.0%		
Sulaymaniyah	D okan	D ukan	100%			66.7%			33.3%		
Sulaymaniyah	Sulaymaniya	Bazyan	100%						100.0%		
Sulaymaniyah	Sulaymaniya	Sarchnar	100%						100.0%		
Tameem	Kirkuk	D ibs	100%			50.0%			50.0%		
Tameem	Kirkuk	Kirkuk	100%			36.2%		2.9%	61.0%		
Tameem	Kirkuk	Shorja	100%						100.0%		



Place of Origin

Governorate	District	Village/Neighbourhood	Total	FROM													
				<>	Anbar	Babylon	Baghdad	Basrah	Diyala	Erbil	Mulhanna	Ninewa	Qadissiya	Salah al-Din	Tameem	Wassit	
Total			100%	0.1%	0.2%	0.0%	77.1%	1.6%	0.4%	0.0%	0.0%	18.6%	0.1%	0.2%	1.6%	0.0%	
Dahuk	Amedi	Amedi	100%		4.2%		91.7%								4.2%		
Dahuk	Amedi	Aradin Nasara	100%			2.9%	97.1%										
Dahuk	Amedi	Barnar	100%				83.3%		16.7%								
Dahuk	Amedi	Benata	100%				100.0%										
Dahuk	Amedi	Bilejank	100%				84.6%								15.4%		
Dahuk	Amedi	Chalke	100%				100.0%										
Dahuk	Amedi	Dawudye	100%				100.0%										
Dahuk	Amedi	Dih	100%		16.7%		83.3%										
Dahuk	Amedi	Inishke	100%				77.9%					22.1%					
Dahuk	Amedi	Jidke	100%				100.0%										
Dahuk	Amedi	Kani Mase	100%				100.0%										
Dahuk	Amedi	Sardarav	100%				100.0%										
Dahuk	Amedi	Sarsink	100%				66.7%					33.3%					
Dahuk	Amedi	Tine	100%				100.0%										
Dahuk	Dahuk	Bagera C collective	100%				25.0%					75.0%					
Dahuk	Dahuk	Bagera Lower	100%				33.3%					66.7%					
Dahuk	Dahuk	Baroshke	100%				67.0%	3.4%				29.6%					
Dahuk	Dahuk	Dahuk	100%		0.5%		68.9%	1.0%		0.5%		27.3%		0.2%	1.7%		
Dahuk	Dahuk	Kuret Gavana	100%				68.8%					31.3%					
Dahuk	Dahuk	Malta Islam	100%				100.0%										
Dahuk	Dahuk	Malta Nasara	100%				100.0%										
Dahuk	Dahuk	Shakhke	100%				100.0%										
Dahuk	Dahuk	Shindikha	100%				44.4%					55.6%					
Dahuk	Sumel	Avzreek Miri	100%				100.0%										
Dahuk	Sumel	Avzreek Shani	100%				100.0%										
Dahuk	Sumel	Baghuja	100%				42.9%					57.1%					
Dahuk	Sumel	Bajid Barav	100%				100.0%										
Dahuk	Sumel	Bakhitme	100%				76.2%					16.7%			7.1%		
Dahuk	Sumel	Hawrezk	100%				47.5%	6.6%				45.9%					
Dahuk	Sumel	Khanke C collective	100%				100.0%										
Dahuk	Sumel	Misereek Collective	100%				70.0%					30.0%					
Dahuk	Sumel	Seje	100%				93.0%					5.3%			1.8%		
Dahuk	Sumel	Semel	100%				50.0%					50.0%					
Dahuk	Sumel	Shkafda	100%				95.2%					4.8%					
Dahuk	Sumel	Surka	100%				70.6%					23.5%			5.9%		
Dahuk	Zakho	Bedar	100%				70.0%					30.0%					
Dahuk	Zakho	Beerke	100%				93.3%			6.7%							
Dahuk	Zakho	Bersive C collective	100%				96.9%					3.1%					
Dahuk	Zakho	Derabun	100%				97.4%								2.6%		
Dahuk	Zakho	Hizawa C collective	100%				100.0%										
Dahuk	Zakho	Levo	100%				90.0%					10.0%					
Dahuk	Zakho	Mergasur	100%				100.0%										
Dahuk	Zakho	Navkandal	100%				75.0%					25.0%					
Dahuk	Zakho	Peshabur C collective	100%		1.4%		97.3%					1.4%					
Erbil	Erbil	Ainkawa	100%	0.7%	0.7%	0.1%	73.3%			0.2%		21.2%		0.1%	3.8%		
Erbil	Erbil	Bahrka	100%				78.6%					21.4%					
Erbil	Erbil	Bahrka C collective	100%				40.0%					50.0%			10.0%		
Erbil	erbil	Nawroz	100%				100.0%					100.0%					
Erbil	Erbil	Shawes	100%				100.0%					100.0%					
Ninewa	Al-Hamdaniya	Al-Hamdaniya	100%				68.5%					31.5%					
Ninewa	Al-Hamdaniya	Bartalah	100%				61.3%					34.2%		0.5%	4.0%		
Ninewa	Al-Hamdaniya	Bashiq	100%				57.1%		2.7%			37.4%			2.7%		
Ninewa	Al-Hamdaniya	Krmales	100%				94.0%					6.0%					
Ninewa	Mosul	Mosul	100%				100.0%										
Ninewa	Shekhan	Shekhan	100%				86.8%	1.7%				9.2%			2.3%		
Ninewa	Tilkaf	Alqosh	100%				86.0%	1.1%	0.6%			11.4%		0.3%	0.6%		
Ninewa	Tilkaf	Batnay	100%			0.3%	91.8%	1.6%	0.3%			4.8%		0.3%	0.9%		
Ninewa	Tilkaf	Shekhan Maqlub	100%				100.0%										
Ninewa	Tilkaf	Tal U squf	100%				83.7%	3.9%	1.2%			9.3%	1.4%				
Ninewa	Tilkaf	Tilkaf	100%				78.4%	8.2%	0.5%			11.7%			1.2%	0.5%	
Sulaymaniyah	Darbandikhan	Darbandikhan	100%				100.0%										
Sulaymaniyah	Dokan	Dokan	100%				100.0%										
Sulaymaniyah	Sulaymaniya	Bazyan	100%									100.0%					
Sulaymaniyah	Sulaymaniya	Sarchnar	100%				100.0%										
Tameem	Kirkuk	Kirkuk	100%				100.0%										
Tameem	Kirkuk	Kirkuk	100%				82.4%					14.8%		2.9%			
Tameem	Kirkuk	Shorja	100%				100.0%										



Intentions

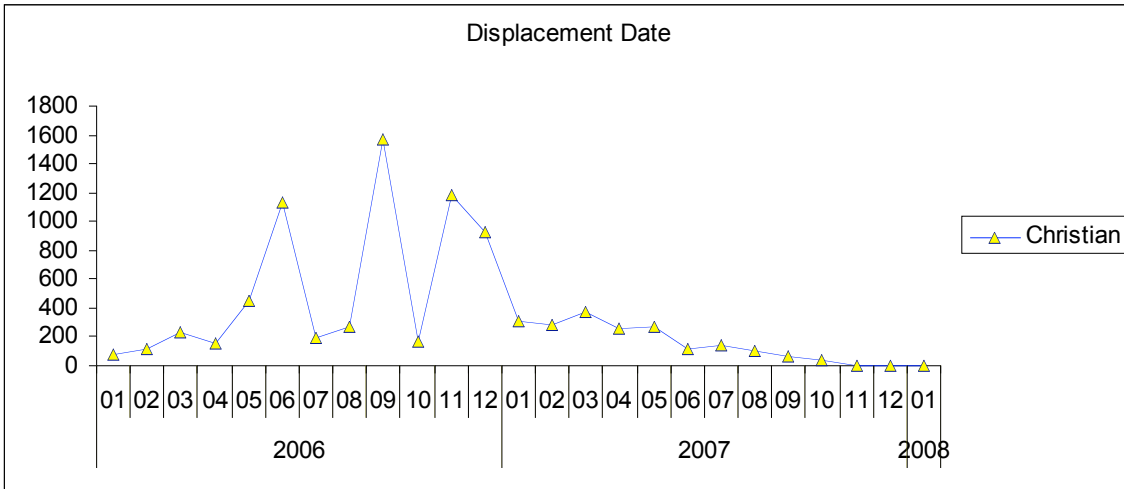
Governorate	District	Village/Neighbourhood	Total	Locally integrate in the current location	Resettle in a third location	Return to their place of origin	Waiting on one or several factors to make a decision
Total			100%	13%	21%	65%	0%
Dahuk	Amedi	Amedi	100%	61%	39%		
Dahuk	Amedi	Aradin Nasara	100%	60%	37%		3%
Dahuk	Amedi	Bamarne	100%	83%	17%		
Dahuk	Amedi	Benata	100%	100%			
Dahuk	Amedi	Bilejank	100%		100%		
Dahuk	Amedi	C halke	100%	100%			
Dahuk	Amedi	D awudye	100%	91%	9%		
Dahuk	Amedi	Di he	100%	100%			
Dahuk	Amedi	Inishke	100%	84%	7%	6%	3%
Dahuk	Amedi	Jdidke	100%	100%			
Dahuk	Amedi	Kani Mase	100%	100%			
Dahuk	Amedi	Sardarav	100%	100%			
Dahuk	Amedi	Sarsink	100%	84%		4%	11%
Dahuk	Amedi	T ine	100%	14%	57%	29%	
Dahuk	Dahuk	Bagera C ollective	100%	93%		7%	
Dahuk	Dahuk	Bagera Lower	100%	100%			
Dahuk	Dahuk	Baroshke	100%	42%	38%	20%	
Dahuk	Dahuk	D ahuk	100%	33%	51%	16%	
Dahuk	Dahuk	Kuret Gavana	100%	97%	3%		
Dahuk	Dahuk	Malta Islam	100%		60%	40%	
Dahuk	Dahuk	Malta N asara	100%	50%	50%		
Dahuk	Dahuk	Shakhke	100%	50%	50%		
Dahuk	Dahuk	Shindukha	100%	56%	22%	22%	
U ahuk	Sumel	Avzreek Miri	100%	43%	57%		
Dahuk	Sumel	Avzreek Shani	100%	100%			
Dahuk	Sumel	Baghluja	100%	100%			
Dahuk	Sumel	Bajid Barav	100%	17%	83%		
Dahuk	Sumel	Bakhitme	100%	83%	7%	10%	
Dahuk	Sumel	H awrezk	100%	82%		18%	
Dahuk	Sumel	Khanke C ollective	100%	100%			
Dahuk	Sumel	Misereek C ollective	100%	50%	40%	10%	
Dahuk	Sumel	Seje	100%	100%			
Dahuk	Sumel	Semel	100%	50%		50%	
Dahuk	Sumel	Shkaf dla	100%	100%			
Dahuk	Sumel	Surka	100%	100%			
Dahuk	Zakho	Bedar	100%	100%			
Dahuk	Zakho	Beerke	100%	100%			
Dahuk	Zakho	Bersive C ollective	100%	100%			
Dahuk	Zakho	Derabun	100%	97%	3%		
Dahuk	Zakho	H izawa C ollective	100%	100%			
Dahuk	Zakho	Levo	100%	100%			
Dahuk	Zakho	Mergasur	100%	100%			
Dahuk	Zakho	N avkandal	100%	100%			
Dahuk	Zakho	Peshabur C ollective	100%	95%		5%	
Erbil	Erbil	Ainkawa	100%	5%	4%	91%	0%
Erbil	Erbil	Bahrka	100%			100%	
Erbil	Erbil	Bahrka C ollective	100%			100%	
Erbil	erbil	N awroz	100%		40%	60%	
Erbil	Erbil	Shawes	100%			100%	
N inewa	Al-H amdaniya	Al H amdaniyah	100%			100%	
N inewa	Al-H amdaniya	Bartalah	100%		39%	61%	
N inewa	Al-H amdaniya	Bashiqa	100%		55%	45%	
N inewa	Al-H amdaniya	Krmales	100%			100%	
N inewa	Mosul	Mosul	100%		69%	22%	8%
N inewa	Shekhan	Shekhan	100%		36%	64%	
N inewa	Tilkaif	Alqosh	100%		21%	79%	
N inewa	Tilkaif	Batnay	100%		16%	84%	
N inewa	Tilkaif	Shekhan Maqlub	100%			100%	
N inewa	Tilkaif	Tal U squf	100%		20%	80%	
N inewa	Tilkaif	Tilkef	100%	5%	40%	55%	
Sulaymaniyah	D arbandihkan	D arbandihkan	100%			100%	
Sulaymaniyah	D okan	D ukan	100%			100%	
Sulaymaniyah	Sulaymaniya	Bazyar	100%	100%			
Sulaymaniyah	Sulaymaniya	Sarchnar	100%	40%		60%	
Tameem	Kirkuk	D ibs	100%		100%		
Tameem	Kirkuk	Kirkuk	100%	7%	33%	51%	10%
Tameem	Kirkuk	Shorija	100%				100%



Priority Needs

Governorate	District	Village/Neighbourhood	Access to work	Education	Food	Health	Hygiene	Legal Help	Other	Sanitation	Shelter	Water
Dahuk	Amedi	Amedi	100%		43%	39%					87%	
Dahuk	Amedi	Aradin Nasara	100%	54%		83%					60%	20%
Dahuk	Amedi	Bamarne	83%		17%	17%			17%		33%	
Dahuk	Amedi	Benata	87%	48%	4%	52%			4%	17%	22%	87%
Dahuk	Amedi	Bilejank	100%			46%				23%	54%	100%
Dahuk	Amedi	Chalke	100%		80%				100%			
Dahuk	Amedi	Dawudye	100%	82%		18%					64%	
Dahuk	Amedi	Dine	100%	50%		44%					28%	
Dahuk	Amedi	Inishke	90%	71%	3%	60%	4%			21%	15%	96%
Dahuk	Amedi	Jididke	100%		56%				100%			
Dahuk	Amedi	Kani Mase	100%		77%				100%			
Dahuk	Amedi	Sardarav	100%	86%		71%				43%	14%	29%
Dahuk	Amedi	Sarsink	100%	71%	27%	56%		7%			53%	47%
Dahuk	Amedi	Tine	86%	29%		71%				29%	71%	57%
Dahuk	Dahuk	Bagera Collective	96%	4%	57%	7%		4%	75%		11%	
Dahuk	Dahuk	Bagera Lower	100%		33%				100%		100%	
Dahuk	Dahuk	Baroshke	91%	9%	88%	12%			67%		37%	1%
Dahuk	Dahuk	Dahuk	93%	4%	90%	14%		2%	65%	0%	37%	
Dahuk	Dahuk	Kuret Gavana	94%		47%	6%			56%		38%	
Dahuk	Dahuk	Malta Islam	100%	60%		40%					100%	
Dahuk	Dahuk	Malta Nasara	50%		50%	50%			50%		50%	
Dahuk	Dahuk	Shakhke	100%		50%				50%		50%	50%
Dahuk	Dahuk	Shindukha	78%		100%	100%			22%		78%	
Dahuk	Sumel	Avzreek Miri	100%	71%								
Dahuk	Sumel	Avzreek Shani	100%									
Dahuk	Sumel	Baghluja	100%	71%		43%					14%	
Dahuk	Sumel	Bajid Barav	92%	42%		67%						
Dahuk	Sumel	Bakhitne	90%	21%	26%	26%			10%		33%	
Dahuk	Sumel	Hawrezk	97%	20%		38%		3%			7%	38%
Dahuk	Sumel	Khanke Collective	50%			100%						
Dahuk	Sumel	Misereek Collective	90%	10%	50%				50%		50%	
Dahuk	Sumel	Seje	102%									
Dahuk	Sumel	Semel	100%	50%	50%						50%	
Dahuk	Sumel	Shkafdia	100%	67%		57%					19%	
Dahuk	Sumel	Surka	100%		12%	6%					12%	
Dahuk	Zakho	Bedar	100%		75%				100%		35%	
Dahuk	Zakho	Beerke	100%						100%			
Dahuk	Zakho	Bersive Collective	91%		13%				100%			
Dahuk	Zakho	Derabun	95%	56%		41%						
Dahuk	Zakho	Hizawa Collective	100%						100%		8%	
Dahuk	Zakho	Levo	100%		50%				100%		17%	
Dahuk	Zakho	Mergasur	97%	3%					100%			
Dahuk	Zakho	Navkandal	100%		25%				100%			
Dahuk	Zakho	Peshabur Collective	95%	29%	1%	49%					22%	4%
Erbil	Erbil	Ainkawa	97%	28%				50%	0%		99%	
Erbil	Erbil	Bahrka	57%	29%				57%			100%	
Erbil	Erbil	Bahrka Collective	50%	30%				40%			80%	
Erbil	erbil	Nawroz	100%		40%						100%	
Erbil	Erbil	Shawes	100%					100%			100%	
Ninewa	Al-Hamdaniya	Al Hamdaniyah	97%					100%	3%		100%	
Ninewa	Al-Hamdaniya	Bartalah	97%		32%			100%			71%	
Ninewa	Al-Hamdaniya	Bashiqa	100%		34%			100%			66%	
Ninewa	Al-Hamdaniya	Krmales	100%					100%			100%	
Ninewa	Mosul	Mosul	37%		10%			88%	53%	12%	100%	
Ninewa	Shekhan	Shekhan	100%	11%	24%			89%			76%	
Ninewa	Tilkaif	Alqosh	99%		15%			100%			86%	
Ninewa	Tilkaif	Bathay	92%		8%		8%	100%			92%	
Ninewa	Tilkaif	Shekhan Maqlub	100%					100%			100%	
Ninewa	Tilkaif	Tal Usqif	100%		9%	9%		100%			81%	
Ninewa	Tilkaif	Tilkef	94%		37%			98%			71%	
Sulaymaniyah	Darbandikhan	Darbandikhan		100%	100%				100%		100%	
Sulaymaniyah	Dokan	Dokan			100%				100%			
Sulaymaniyah	Sulaymaniya	Bazyan	100%		100%							
Sulaymaniyah	Sulaymaniya	Sarchnar	40%		100%				100%			
Tameem	Kirkuk	Dibs			100%			100%			100%	
Tameem	Kirkuk	Kirkuk	48%	0%	97%	4%		50%	5%		96%	
Tameem	Kirkuk	Shorja			100%			100%			100%	





Sabean Mandeian Population

Governorate	District	Village/Neighbourhood	Families	%
Total			21	100.0%
Dahuk	Dahuk	Baroshke	1	4.8%
Erbil	Erbil	Ainkawa	4	19.0%
Erbil	Erbil	Bahrka	1	4.8%
Erbil	Erbil	Bahrka Collective	2	9.5%
Erbil	erbil	Nawroz	1	4.8%
Missan	Al-Maimouna	Al Miamona	5	23.8%
Missan	Amara	Amarah	1	4.8%
Sulaymaniyah	Chamchamal	Sarshaqam	2	9.5%
Sulaymaniyah	Sulaymaniya	Sarchnar	2	9.5%
Thi-Qar	Al-Shatra	Sababah	2	9.5%

Living Arrangement (Type of housing)

Governorate	District	Village/Neighbourhood	Total	In the house of host family or relatives	Rented housing
Total			100%	19%	81%
Erbil	Erbil	Ainkawa	100%		100%
Missan	Al-Maimouna	Al Miamona	100%	80%	20%
Missan	Amara	Amarah	100%		100%
Erbil	Erbil	Bahrka	100%		100%
Erbil	Erbil	Bahrka Collective	100%		100%
Dahuk	Dahuk	Baroshke	100%		100%
Erbil	erbil	Nawroz	100%		100%
Thi-Qar	Al-Shatra	Sababah	100%		100%
Sulaymaniyah	Sulaymaniya	Sarchnar	100%		100%
Sulaymaniyah	Chamchamal	Sarshaqam	100%		100%

Place of Origin

Governorate	District	Village/Neighbourhood	Total	FROM		
				Baghdad	Basrah	Diyala
Total			100%	90%	5%	5%
Dahuk	Dahuk	Baroshke	100%		100%	
Erbil	Erbil	Ainkawa	100%	100%		
Erbil	Erbil	Bahrka	100%	100%		
Erbil	Erbil	Bahrka Collective	100%	100%		
Erbil	erbil	Nawroz	100%	100%		
Missan	Al-Maimouna	Al Miamona	100%	80%		20%
Missan	Amara	Amarah	100%	100%		
Sulaymaniyah	Chamchamal	Sarshaqam	100%	100%		
Sulaymaniyah	Sulaymaniya	Sarchnar	100%	100%		
Thi-Qar	Al-Shatra	Sababah	100%	100%		



Intentions

Governorate	District	Village/ Neighbourhood	Total	Locally integrate in the current location	Resettle in a third location	Return to their place of origin
Total			100%	19%	10%	71%
Dahuk	Dahuk	Baroshke	100%		100%	
Erbil	Erbil	Ainkawa	100%	25%		75%
Erbil	Erbil	Bahrka	100%			100%
Erbil	Erbil	Bahrka Collective	100%			100%
Erbil	erbil	Nawroz	100%			100%
Missan	Al-Maimouna	Al Miamona	100%		20%	80%
Missan	Amara	Amarah	100%	100%		
Sulaymaniyah	Chamchamal	Sarshaqam	100%	100%		
Sulaymaniyah	Sulaymaniya	Sarchnar	100%			100%
Thi-Qar	Al-Shatra	Sababah	100%			100%

Priority Needs

Governorate	District	Village/ Neighbourhood	Access to work	Education	Food	Legal Help	Other	Shelter
Dahuk	Dahuk	Baroshke	100%		100%		100%	
Erbil	Erbil	Ainkawa	100%	25%		25%		100%
Erbil	Erbil	Bahrka	100%			100%		100%
Erbil	Erbil	Bahrka						
Erbil	Erbil	Collective	100%					100%
Erbil	erbil	Nawroz	100%					100%
Missan	Al-Maimouna	Al Miamona	100%				100%	100%
Missan	Amara	Amarah	100%				100%	100%
Sulaymaniyah	Chamchamal	Sarshaqam	100%		100%			
Sulaymaniyah	Sulaymaniya	Sarchnar	100%		100%		100%	
Thi-Qar	Al-Shatra	Sababah	100%		100%			100%

